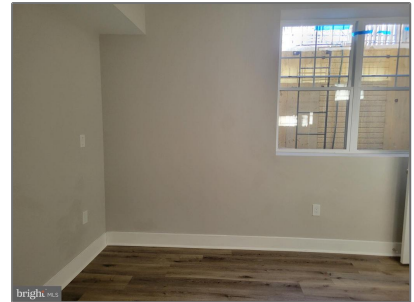


Residential Lease

2,130 Sqft - 1947 CAPITOL AVENUE NE 101,
WASHINGTON, DC 20002



Basic Details

Property Type: **Residential Lease**

Listing Type: **For Rent**

Price: **\$2,850**

Bedrooms: **3**

Bathrooms: **3**

Sqft: **2,130 Sqft**

Year Built: **1928**

Price Per SQFT: **\$2**

Status: **Active**

Agent Info



Amber Williams

📞 (703) 944-3884

✉️ amber@sweethomesamerica.com
