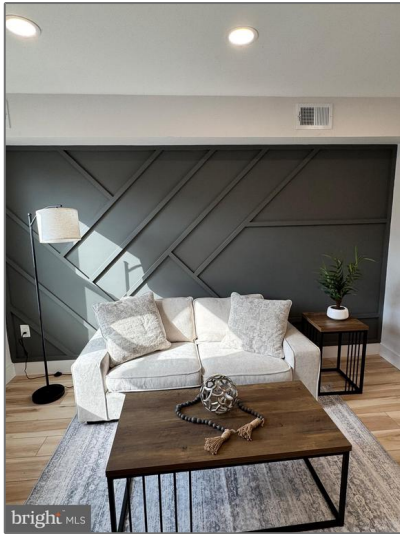


Residential

1,200 Sqft - 5402 BASS PLACE SE,
WASHINGTON, DC 20019



Basic Details

Property Type: **Residential**

Listing Type: **For Sale**

Price: **\$419,900**

Bedrooms: **3**

Bathrooms: **2**

Sqft: **1,200 Sqft**

Year Built: **1947**

Price Per SQFT: **\$525**

Status: **Active**

Agent Info



Amber Williams

(703) 944-3884

amber@sweethomesamerica.com

