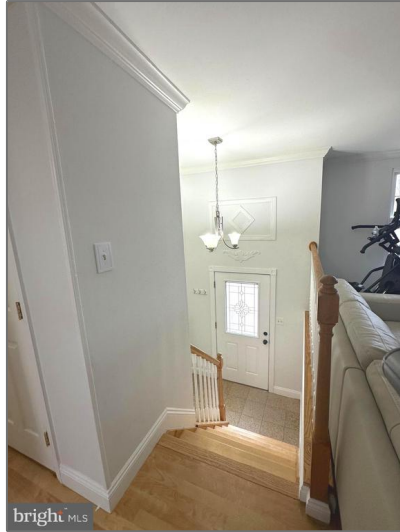


Residential

1,746 Sqft - E 1401 BEECH ROAD, STERLING, VA
20164



Basic [Details](#)

Property Type:	Residential
Listing Type:	For Sale
Price:	\$629,000
Bedrooms:	4
Bathrooms:	3
Sqft:	1,746 Sqft
Year Built:	1973
Price Per SQFT:	\$613
Status:	Active

Address [Map](#)

Street Dir Prefix: **E**

Agent [Info](#)



Amber Williams

(703) 944-3884

amber@sweethomesamerica.com

