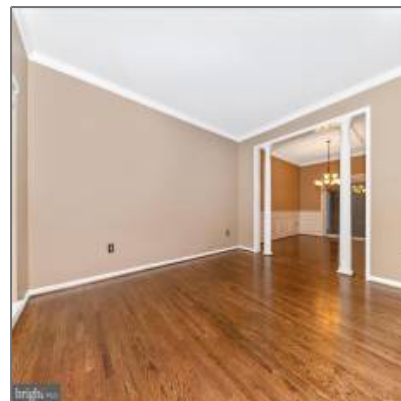
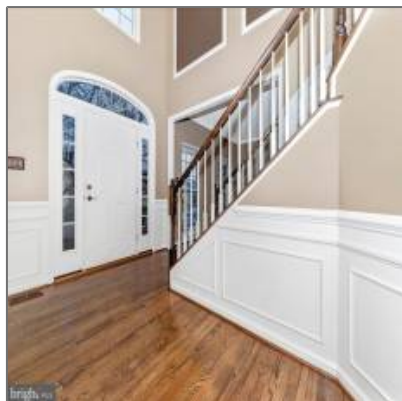


Residential

4,420 Sqft - 5620 JORDAN BOULEVARD, NEW MARKET, MD 21774



Basic Details

Property Type: **Residential**

Listing Type: **For Sale**

Price: **\$895,000**

Bedrooms: **4**

Bathrooms: **3**

Sqft: **4,420 Sqft**

Year Built: **2001**

Price Per SQFT: **\$287**

Status: **Active**

Agent Info



Amber Williams

 (703) 944-3884

 amber@sweethomesamerica.com

