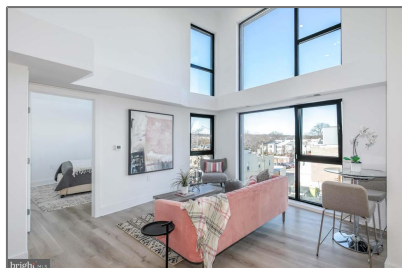
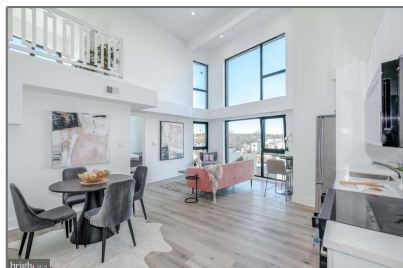


Residential

1,096 Sqft - 4328 GEORGIA AVENUE NW 402,
WASHINGTON, DC 20011



Basic [Details](#)

Property Type: **Residential**

Listing Type: **For Sale**

Price: **\$599,900**

Bedrooms: **2**

Bathrooms: **1**

Sqft: **1,096 Sqft**

Year Built: **2025**

Price Per SQFT: **\$547**

Status: **Active**

Agent [Info](#)



Amber Williams

📞 (703) 944-3884

✉️ amber@sweethomesamerica.com
