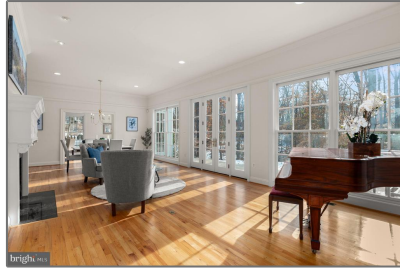


Residential

3,900 Sqft - 7000 BRADLEY BOULEVARD,
BETHESDA, MD 20817



Basic Details

Property Type:	Residential
Listing Type:	For Sale
Price:	\$1,995,000
Bedrooms:	6
Bathrooms:	4
Sqft:	3,900 Sqft
Year Built:	2003
Price Per SQFT:	\$512
Status:	Active

Agent Info



Amber Williams

📞 (703) 944-3884

✉️ amber@sweethomesamerica.com
