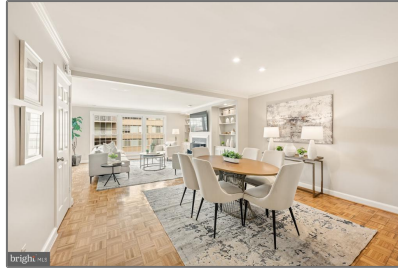


# Residential

1,500 Sqft - 2828 WISCONSIN AVENUE NW 309,  
WASHINGTON, DC 20007



## Basic Details

Property Type: **Residential**

Listing Type: **For Sale**

Price: **\$789,500**

Bedrooms: **2**

Bathrooms: **2**

Sqft: **1,500 Sqft**

Year Built: **1977**

Price Per SQFT: **\$526**

Status: **Active**

## Agent Info



Amber Williams

📞 (703) 944-3884

✉️ [amber@sweethomesamerica.com](mailto:amber@sweethomesamerica.com)

---