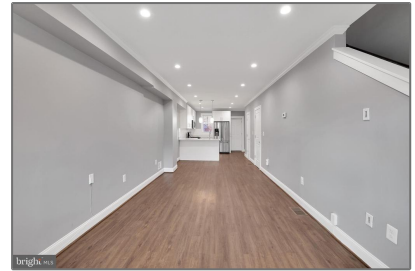
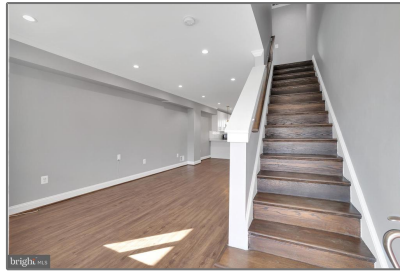
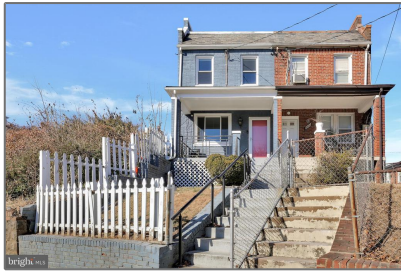


# Residential Lease

2,070 Sqft - 2622 MINNESOTA AVENUE SE,  
WASHINGTON, DC 20020



## Basic Details

Property Type: **Residential Lease**

Listing Type: **For Rent**

Price: **\$3,200**

Bedrooms: **4**

Bathrooms: **3**

Sqft: **2,070 Sqft**

Year Built: **1940**


Price Per SQFT: **\$2**


Status: **Active**

## Agent Info



Amber Williams

 (703) 944-3884

 [amber@sweethomesamerica.com](mailto:amber@sweethomesamerica.com)

---