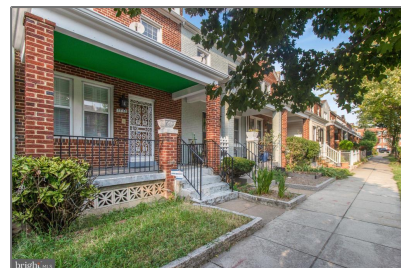
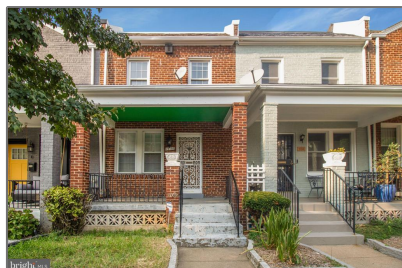


# Residential

1,410 Sqft - 1758 LANG PLACE NE,  
WASHINGTON, DC 20002



## Basic [Details](#)

Property Type: **Residential**

Listing Type: **For Sale**

Price: **\$525,000**

Bedrooms: **3**

Bathrooms: **2**

Sqft: **1,410 Sqft**

Year Built: **1940**

Price Per SQFT: **\$513**

Status: **Active**

## Agent [Info](#)



Amber Williams

(703) 944-3884

[amber@sweethomesamerica.com](mailto:amber@sweethomesamerica.com)

