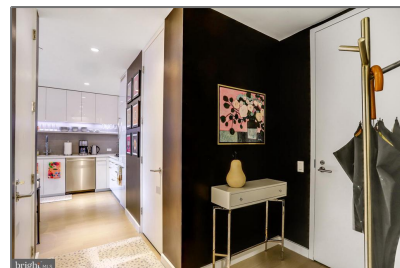
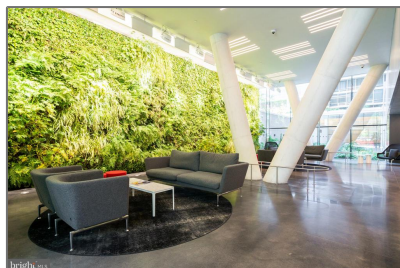
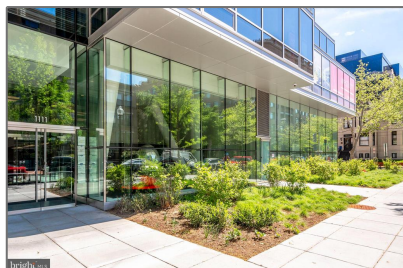


Residential

750 Sqft - 1111 24TH STREET NW 38,
WASHINGTON, DC 20037



Basic [Details](#)

Property Type: **Residential**

Listing Type: **For Sale**

Price: **\$759,000**

Bedrooms: **1**

Bathrooms: **1**

Sqft: **750 Sqft**

Year Built: **2017**

Price Per SQFT: **\$1,012**

Status: **Active**

Agent [Info](#)



Amber Williams

(703) 944-3884

amber@sweethomesamerica.com

