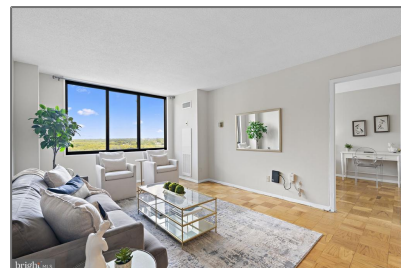
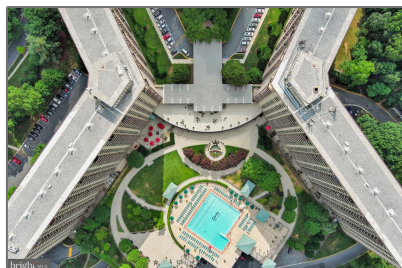
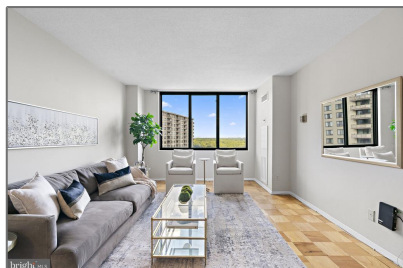


# Residential

630 Sqft - 5225 POOKS HILL ROAD 1314,  
BETHESDA, MD 20814



## Basic Details

Property Type: **Residential**

Listing Type: **For Sale**

Price: **\$175,000**

Bedrooms: **1**

Bathrooms: **1**

Sqft: **630 Sqft**

Year Built: **1973**

Price Per SQFT: **\$278**

Status: **Active**

## Agent Info



Amber Williams

📞 (703) 944-3884

✉️ [amber@sweethomesamerica.com](mailto:amber@sweethomesamerica.com)

