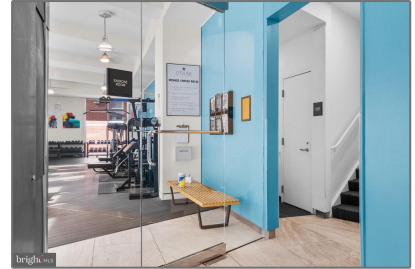


# Residential

850 Sqft - 4101 ALBEMARLE STREET NW 402,  
WASHINGTON, DC 20016



## Basic Details

Property Type:	<b>Residential</b>
Listing Type:	<b>For Sale</b>
Price:	<b>\$567,500</b>
Bedrooms:	<b>1</b>
Bathrooms:	<b>1</b>
Sqft:	<b>850 Sqft</b>
Year Built:	<b>2005</b>
Price Per SQFT:	<b>\$668</b>
Status:	<b>Active</b>

## Agent Info



Amber Williams

📞 (703) 944-3884

✉️ [amber@sweethomesamerica.com](mailto:amber@sweethomesamerica.com)

---