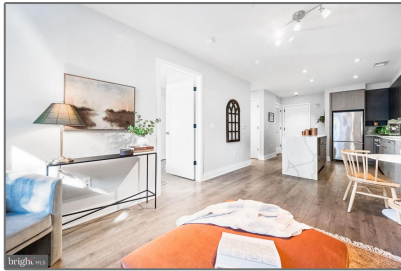


Residential

625 Sqft - 900 11TH STREET SE, WASHINGTON, DC 20003



Basic Details

Property Type:	Residential
Listing Type:	For Sale
Price:	\$389,000
Bedrooms:	1
Bathrooms:	1
Sqft:	625 Sqft
Year Built:	2017
Price Per SQFT:	\$622
Status:	Active

Agent Info



Amber Williams

📞 (703) 944-3884

✉️ amber@sweethomesamerica.com
