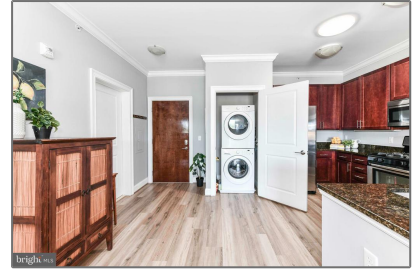
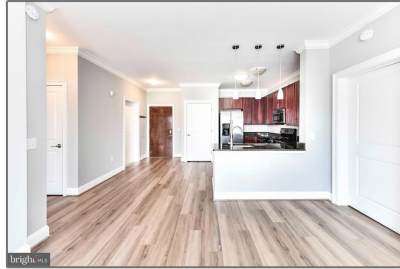
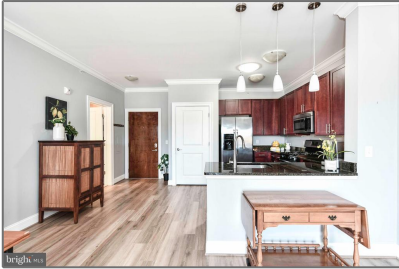


Residential

1,155 Sqft - 6301 EDSALL ROAD 610,
ALEXANDRIA, VA 22312



Basic [Details](#)

Property Type: **Residential**

Listing Type: **For Sale**

Price: **\$449,999**

Bedrooms: **2**

Bathrooms: **2**

Sqft: **1,155 Sqft**

Year Built: **2012**

Price Per SQFT: **\$390**

Status: **Active**

Agent [Info](#)



Amber Williams

 (703) 944-3884

 amber@sweethomesamerica.com
