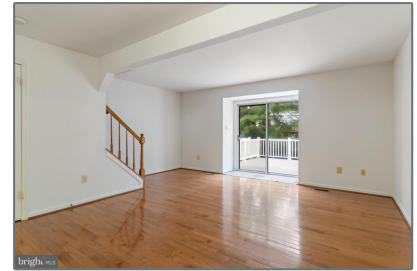


Residential

1,770 Sqft - 3203 SONIA TRAIL S 60, ELLICOTT CITY, MD 21043



Basic Details

Property Type:	Residential
Listing Type:	For Sale
Price:	\$434,900
Bedrooms:	3
Bathrooms:	2
Sqft:	1,770 Sqft
Year Built:	1991
Price Per SQFT:	\$364
Status:	Active

Agent Info



Amber Williams

📞 (703) 944-3884

✉️ amber@sweethomesamerica.com
