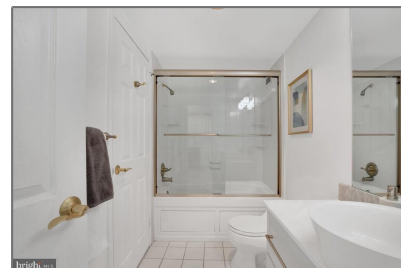
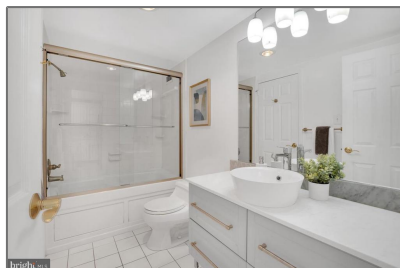


Residential

630 Sqft - 5225 POOKS HILL ROAD 1105,
BETHESDA, MD 20814



Basic [Details](#)

Property Type: **Residential**

Listing Type: **For Sale**

Price: **\$199,000**

Bedrooms: **1**

Bathrooms: **1**

Sqft: **630 Sqft**

Year Built: **1973**

Price Per SQFT: **\$316**

Status: **Active**

Agent [Info](#)



Amber Williams

(703) 944-3884

amber@sweethomesamerica.com
