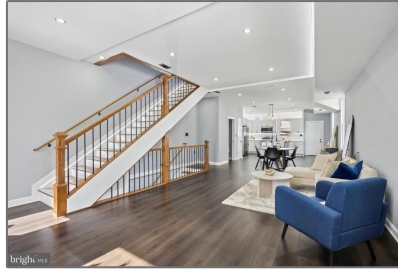


Residential

2,170 Sqft - 1622 T STREET SE, WASHINGTON, DC 20020



Basic Details

Property Type:	Residential
Listing Type:	For Sale
Price:	\$950,000
Bedrooms:	5
Bathrooms:	3
Sqft:	2,170 Sqft
Year Built:	1912
Price Per SQFT:	\$550
Status:	Active

Agent Info



Amber Williams

 (703) 944-3884

 amber@sweethomesamerica.com
