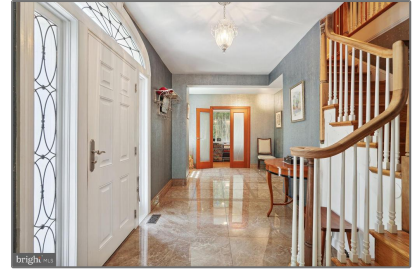


Residential Lease

4,946 Sqft - 4220 ARGYLE TERRACE NW,
WASHINGTON, DC 20011




Basic [Details](#)

Property Type:	Residential Lease
Listing Type:	For Rent
Price:	\$7,500
Bedrooms:	6
Bathrooms:	4
Sqft:	4,946 Sqft
Year Built:	1938
Price Per SQFT:	\$2
Status:	Active

Agent [Info](#)



Amber Williams

 (703) 944-3884

 amber@sweethomesamerica.com
