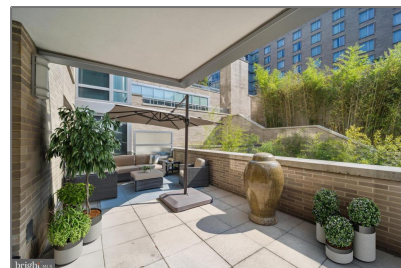
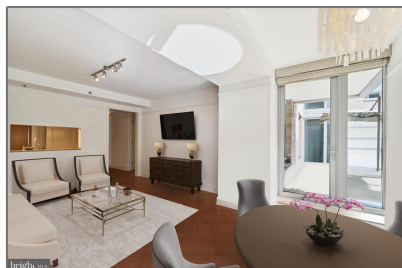


Residential

1,059 Sqft - 1111 23RD STREET NW 2,
WASHINGTON, DC 20037



Basic [Details](#)

Property Type: **Residential**

Listing Type: **For Sale**

Price: **\$1,195,000**

Bedrooms: **2**

Bathrooms: **2**

Sqft: **1,059 Sqft**

Year Built: **2000**

Price Per SQFT: **\$1,128**

Status: **Active**

Agent [Info](#)



Amber Williams

📞 (703) 944-3884

✉️ amber@sweethomesamerica.com
