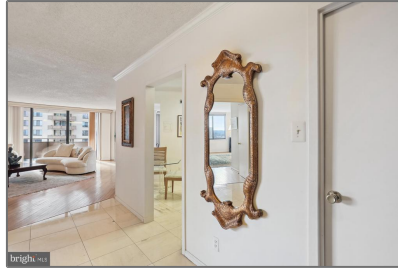


Residential

1,845 Sqft - 5225 POOKS HILL ROAD 901,
BETHESDA, MD 20814



Basic [Details](#)

Property Type: **Residential**

Listing Type: **For Sale**

Price: **\$460,000**

Bedrooms: **2**

Bathrooms: **2**

Sqft: **1,845 Sqft**

Year Built: **1973**

Price Per SQFT: **\$249**

Status: **Active**

Agent [Info](#)



Amber Williams

(703) 944-3884

amber@sweethomesamerica.com
