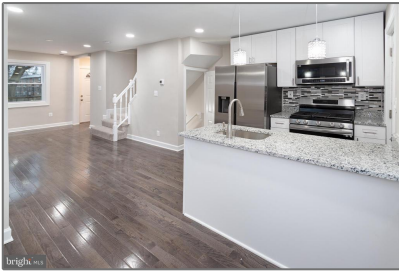


Residential

1,215 Sqft - 338 53RD STREET NE,
WASHINGTON, DC 20019



Basic [Details](#)

Property Type: **Residential**

Listing Type: **For Sale**

Price: **\$399,000**

Bedrooms: **3**

Bathrooms: **2**

Sqft: **1,215 Sqft**

Year Built: **1941**

Price Per SQFT: **\$493**

Status: **Active**

Agent [Info](#)



Amber Williams

(703) 944-3884

amber@sweethomesamerica.com
