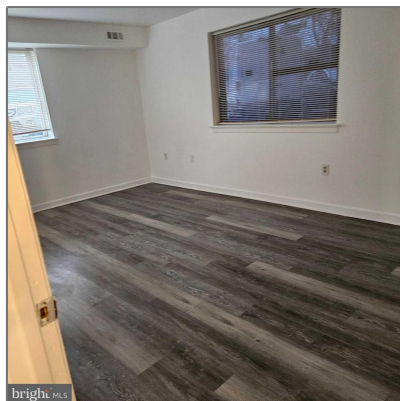


Residential

989 Sqft - 11380 CHERRY HILL ROAD 1,
BELTSVILLE, MD 20705



Basic Details

Property Type: **Residential**

Listing Type: **For Sale**

Price: **\$190,000**

Bedrooms: **2**

Bathrooms: **1**

Sqft: **989 Sqft**

Year Built: **1965**

Price Per SQFT: **\$192**

Status: **Active**

Agent Info



Amber Williams

📞 (703) 944-3884

✉️ amber@sweethomesamerica.com

