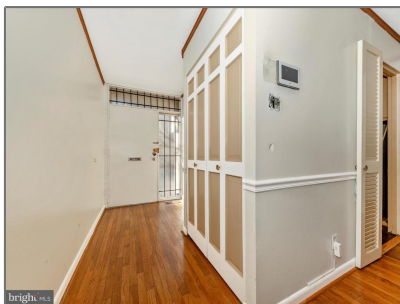
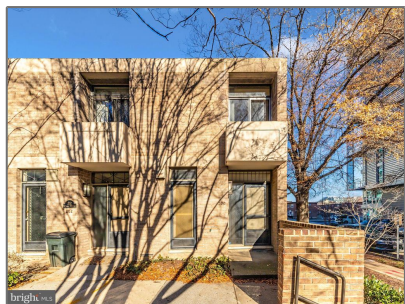


Residential

2,222 Sqft - 200 M STREET SW 36,
WASHINGTON, DC 20024



Basic Details

Property Type: **Residential**

Listing Type: **For Sale**

Price: **\$685,000**

Bedrooms: **2**

Bathrooms: **2**

Sqft: **2,222 Sqft**

Year Built: **1967**

Price Per SQFT: **\$324**

Status: **Active**

Agent Info



Amber Williams

(703) 944-3884

amber@sweethomesamerica.com
