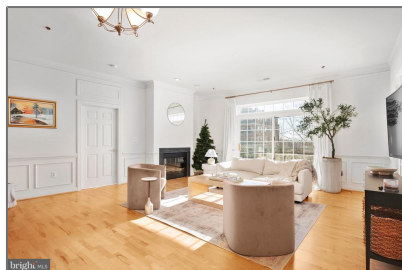
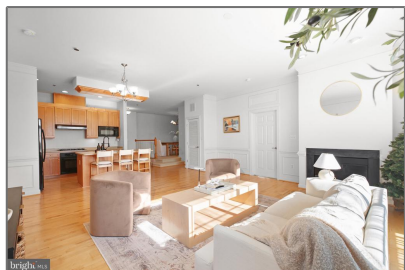


Residential

1,477 Sqft - 830 BELMONT BAY DRIVE 302,
WOODBIDGE, VA 22191



Basic Details

Property Type: **Residential**

Listing Type: **For Sale**

Price: **\$435,000**

Bedrooms: **2**

Bathrooms: **2**

Sqft: **1,477 Sqft**

Year Built: **2005**

Price Per SQFT: **\$295**

Status: **Active**

Agent Info



Amber Williams

📞 (703) 944-3884

✉️ amber@sweethomesamerica.com
