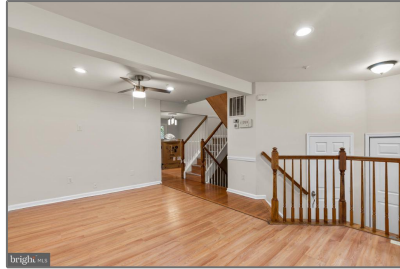


Residential

1,220 Sqft - 20322 WATERS ROW TERRACE,
GERMANTOWN, MD 20874



Basic Details

Property Type:	Residential
Listing Type:	For Sale
Price:	\$460,000
Bedrooms:	4
Bathrooms:	2
Sqft:	1,220 Sqft
Year Built:	1992
Price Per SQFT:	\$377
Status:	Active

Agent Info



Amber Williams

📞 (703) 944-3884

✉️ amber@sweethomesamerica.com

