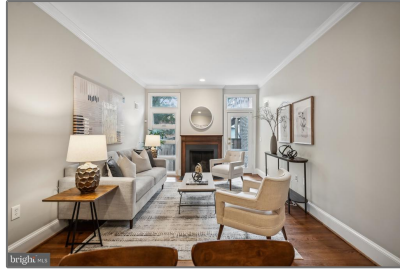


Residential

1,040 Sqft - 1409 POTOMAC AVENUE SE,
WASHINGTON, DC 20003



Basic Details

Property Type: **Residential**

Listing Type: **For Sale**

Price: **\$799,000**

Bedrooms: **2**

Bathrooms: **1**

Sqft: **1,040 Sqft**

Year Built: **1916**

Price Per SQFT: **\$768**

Status: **Active**

Agent Info



Amber Williams

📞 (703) 944-3884

✉️ amber@sweethomesamerica.com

