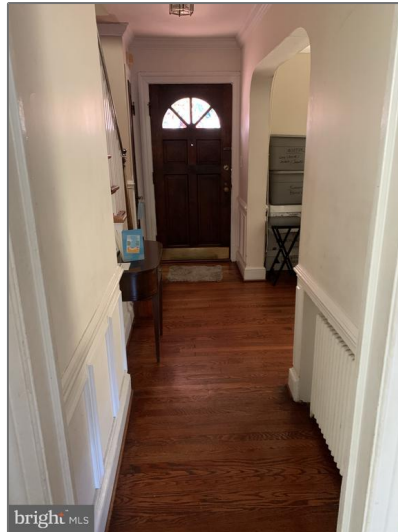


# Residential

1,512 Sqft - E 300 GLEBE ROAD, ALEXANDRIA,  
VA 22305



## Basic [Details](#)

Property Type:	<b>Residential</b>
Listing Type:	<b>For Sale</b>
Price:	<b>\$825,000</b>
Bedrooms:	<b>2</b>
Bathrooms:	<b>2</b>
Sqft:	<b>1,512 Sqft</b>
Year Built:	<b>1935</b>
Price Per SQFT:	<b>\$777</b>
Status:	<b>Active</b>

## Address [Map](#)

Street Dir Prefix: **E**

## Agent [Info](#)



Amber Williams

(703) 944-3884

[amber@sweethomesamerica.com](mailto:amber@sweethomesamerica.com)

