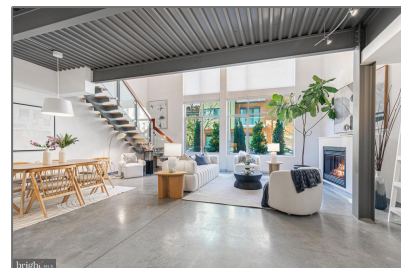


Residential

1,621 Sqft - 2351 CHAMPLAIN STREET NW,
WASHINGTON, DC 20009



Basic [Details](#)

Property Type: **Residential**

Listing Type: **For Sale**

Price: **\$1,060,000**

Bedrooms: **2**

Bathrooms: **2**

Sqft: **1,621 Sqft**

Year Built: **2008**

Price Per SQFT: **\$654**

Status: **Active**

Agent [Info](#)



Amber Williams

(703) 944-3884

amber@sweethomesamerica.com

