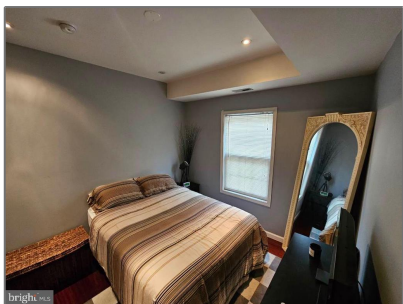


Residential

1,000 Sqft - 5210 F SE 3, WASHINGTON, DC
20019



Basic Details

Property Type: **Residential**

Listing Type: **For Sale**

Price: **\$264,000**

Bedrooms: **2**

Bathrooms: **2**

Sqft: **1,000 Sqft**

Year Built: **2008**

Price Per SQFT: **\$264**

Status: **Active**

Agent Info



Amber Williams

(703) 944-3884

amber@sweethomesamerica.com

