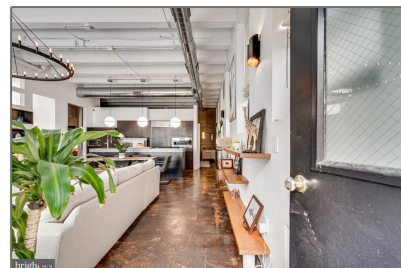
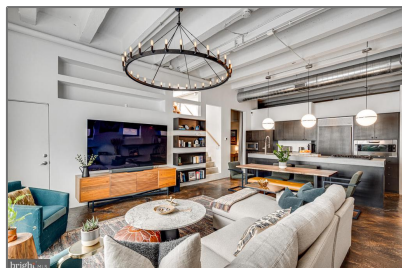


Residential

1,250 Sqft - 1413 SWANN STREET NW 1413,
WASHINGTON, DC 20009



Basic [Details](#)

Property Type: **Residential**

Listing Type: **For Sale**

Price: **\$1,345,000**

Bedrooms: **2**

Bathrooms: **2**

Sqft: **1,250 Sqft**

Year Built: **1900**

Price Per SQFT: **\$1,076**

Status: **Active**

Agent [Info](#)



Amber Williams

(703) 944-3884

amber@sweethomesamerica.com
