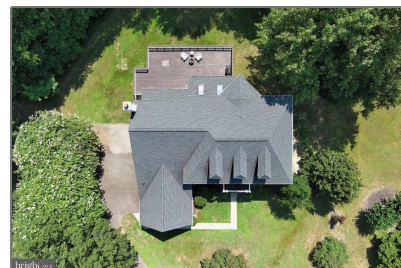


# Residential

5,730 Sqft - 8245 TIVERTON DRIVE, PORT TOBACCO, MD 20677



## Basic [Details](#)

Property Type: **Residential**

Listing Type: **For Sale**

Price: **\$759,000**

Bedrooms: **5**

Bathrooms: **4**

Sqft: **5,730 Sqft**

Year Built: **2001**

Price Per SQFT: **\$202**

Status: **Active**

## Agent [Info](#)



Amber Williams

📞 (703) 944-3884

✉️ [amber@sweethomesamerica.com](mailto:amber@sweethomesamerica.com)

