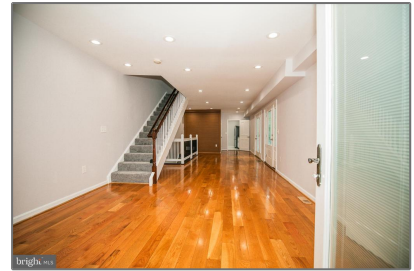
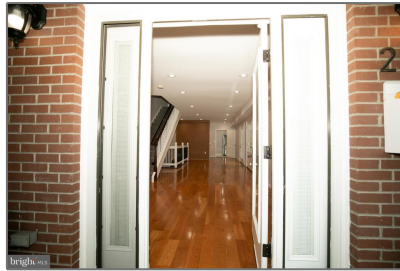


Residential

2,361 Sqft - 2730 22ND STREET NE,
WASHINGTON, DC 20018



Basic [Details](#)

Property Type:	Residential
Listing Type:	For Sale
Price:	\$729,000
Bedrooms:	5
Bathrooms:	6
Sqft:	2,361 Sqft
Year Built:	1910
Price Per SQFT:	\$426
Status:	Active

Agent [Info](#)



Amber Williams

☎ (703) 944-3884

✉ amber@sweethomesamerica.com
