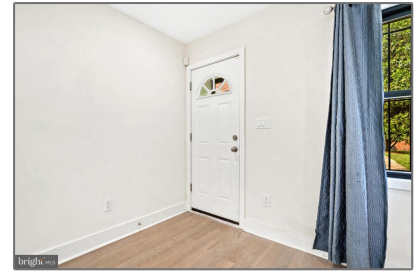


Residential

870 Sqft - 5063 SHERIFF ROAD NE,
WASHINGTON, DC 20019



Basic Details

Property Type:	Residential
Listing Type:	For Sale
Price:	\$334,000
Bedrooms:	2
Bathrooms:	2
Sqft:	870 Sqft
Year Built:	1941
Price Per SQFT:	\$384
Status:	Active

Agent Info



Amber Williams

 (703) 944-3884

 amber@sweethomesamerica.com

