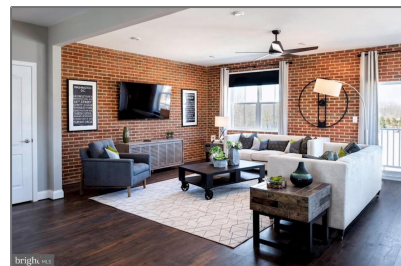
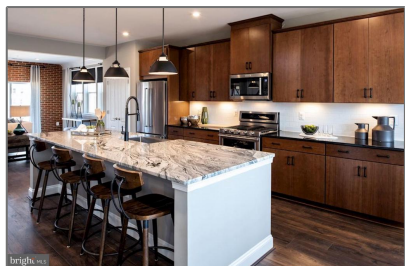


Residential

2,418 Sqft - 9928B SIR BARTON WAY, LAUREL,
MD 20723




Basic Details

Property Type:	Residential
Listing Type:	For Sale
Price:	\$511,990
Bedrooms:	3
Bathrooms:	2
Sqft:	2,418 Sqft
Year Built:	2024
Price Per SQFT:	\$212
Status:	Active

Agent Info



Amber Williams

 (703) 944-3884

 amber@sweethomesamerica.com
