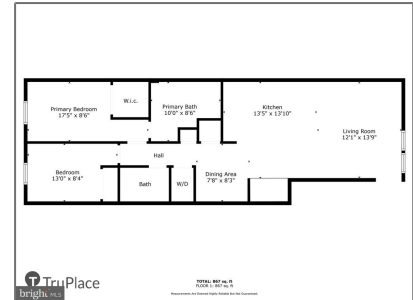


# Residential

887 Sqft - 2221 M STREET NE 302,  
WASHINGTON, DC 20002



## Basic Details

Property Type:	<b>Residential</b>
Listing Type:	<b>For Sale</b>
Price:	<b>\$435,000</b>
Bedrooms:	<b>2</b>
Bathrooms:	<b>2</b>
Sqft:	<b>887 Sqft</b>
Year Built:	<b>1944</b>
Price Per SQFT:	<b>\$490</b>
Status:	<b>Active</b>

## Agent Info



Amber Williams

📞 (703) 944-3884

✉️ [amber@sweethomesamerica.com](mailto:amber@sweethomesamerica.com)

---