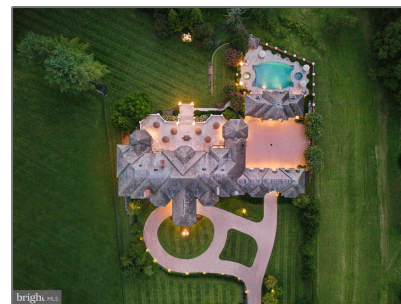


Residential

22,300 Sqft - 11510 HIGHLAND FARM ROAD,
POTOMAC, MD 20854



Basic Details

Property Type: **Residential**

Listing Type: **For Sale**

Price: **\$8,250,000**

Bedrooms: **8**

Bathrooms: **10**

Sqft: **22,300 Sqft**

Year Built: **2001**

Price Per SQFT: **\$370**

Status: **Active**

Agent Info



Amber Williams

📞 (703) 944-3884

✉️ amber@sweethomesamerica.com
