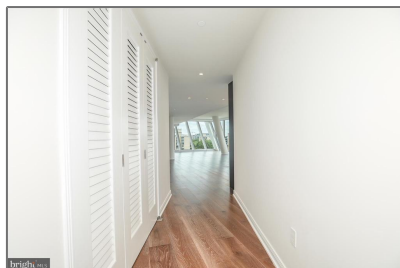
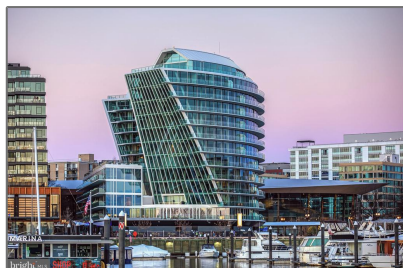


Residential

2,355 Sqft - 601 WHARF STREET SW 905,
WASHINGTON, DC 20024



Basic Details

Property Type: **Residential**

Listing Type: **For Sale**

Price: **\$2,100,000**

Bedrooms: **2**

Bathrooms: **2**

Sqft: **2,355 Sqft**

Year Built: **2022**


Price Per SQFT: **\$892**

Status: **Active**

Agent Info



Amber Williams

 (703) 944-3884

 amber@sweethomesamerica.com
