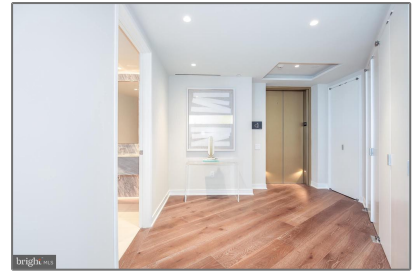
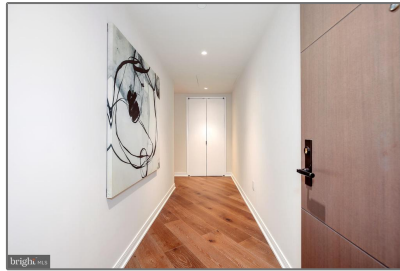


Residential

3,660 Sqft - 601 WHARF STREET SW 1001,
WASHINGTON, DC 20024



Basic Details

Property Type: **Residential**

Listing Type: **For Sale**

Price: **\$5,999,000**

Bedrooms: **3**

Bathrooms: **4**

Sqft: **3,660 Sqft**

Year Built: **2022**


Price Per SQFT: **\$1,639**

Status: **Active**

Agent Info



Amber Williams

 (703) 944-3884

 amber@sweethomesamerica.com

