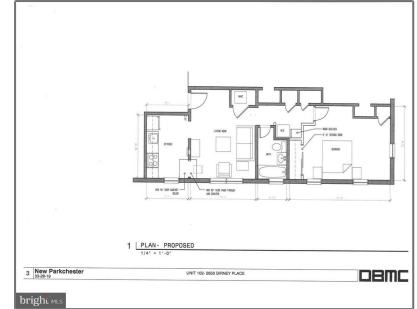


# Residential

575 Sqft - 2650 BIRNEY PLACE SE 102,  
WASHINGTON, DC 20020



## Basic Details

Property Type:	<b>Residential</b>
Listing Type:	<b>For Sale</b>
Price:	<b>\$159,900</b>
Bedrooms:	<b>1</b>
Bathrooms:	<b>1</b>
Sqft:	<b>575 Sqft</b>
Year Built:	<b>1952</b>
Price Per SQFT:	<b>\$278</b>
Status:	<b>Active</b>

## Agent Info



Amber Williams

📞 (703) 944-3884

✉️ [amber@sweethomesamerica.com](mailto:amber@sweethomesamerica.com)

---